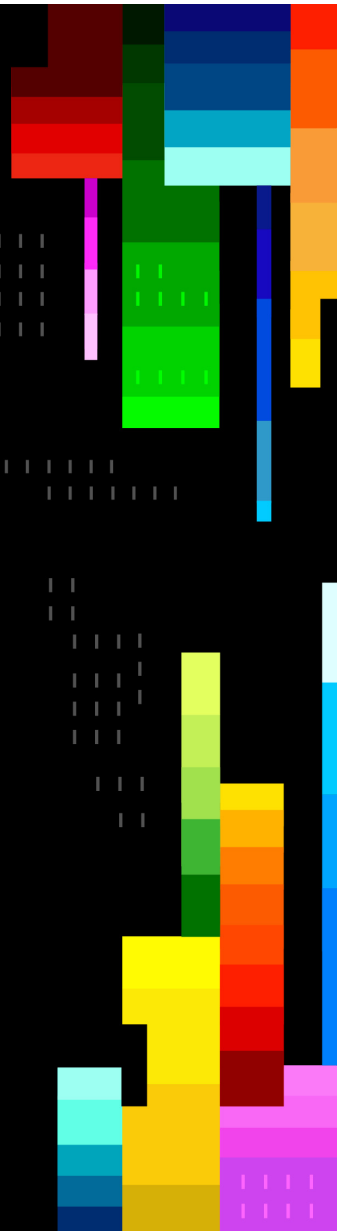




```
|||||
|||||
|||||
|||||
```

```
|||||
|||||
|||||
|||||
```



BUILD

MICROSOFT BUILD

링크: buildlocalhost.learnondemand.net/Class/755556

→ outlook.com 또는 gmail.com 이메일로 로그인

→ My Dashboard 이동

→ 접속 키 입력: **32DD94740394255A**

→ 다시 링크



GitHub Copilot 야~호!

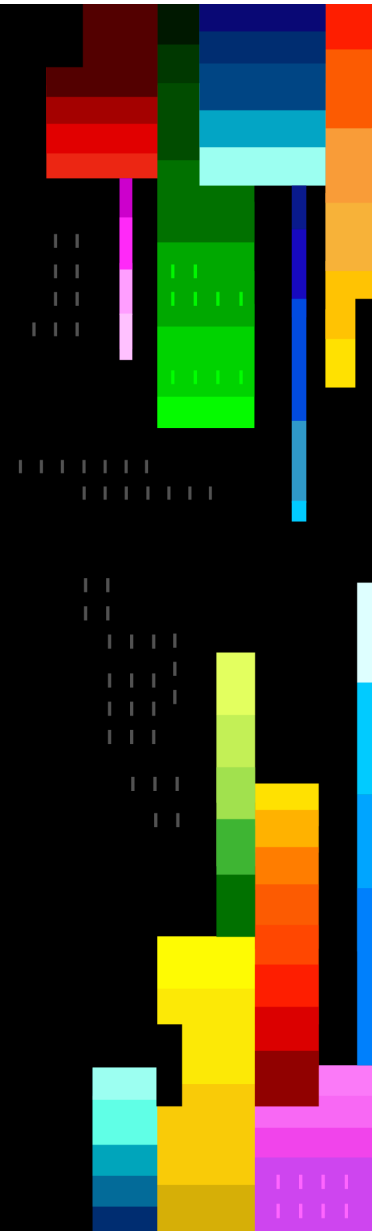
Copilot CLI 만으로 딸깍 앱 개발 배포 및 검증

유저스틴

수석 디벨로퍼 아드보캇
GitHub

 @justinyoo

 @justinyoo





오늘 할 것들

- 랩 모듈 00 - 04
- Azure Skills
- Azure MCP 서버
- Azure Skills 플러그인
- 랩 모듈 05 - 07

링크: buildlocalhost.learnondemand.net/Class/755556

➡ outlook.com 또는 gmail.com 이메일로 로그인

➡ My Dashboard 이동

➡ 접속 키 입력: **32DD94740394255A**

➡ 다시 링크

The image shows a terminal window with a dark background. On the left, a login prompt for 'LabUser' is displayed. The password field contains several dots and a cursor, with a red box highlighting the right arrow key. On the right, a sidebar titled 'From zero to deployed on Azure with AI agents' contains instructions and resources. The sidebar has tabs for 'Instructions' and 'Resources'. The main content area of the sidebar includes a welcome message, a note about text formatting, instructions on logging into a virtual machine with the password 'Pa\$\$w0rd', and several helpful links. At the bottom of the sidebar, there are navigation buttons for 'Previous' and 'End', and a timer showing '1 Hr 59 Min Remaining'.

From zero to deployed on Azure with AI agents

Instructions Resources

From zero to deployed on Azure with AI agents

Welcome to Your Lab Environment

Note: Text formatted as an `example` represents type text. Clicking on this text will automatically insert it to prevent any typing errors.

To begin, log into the **virtual machine** using the following credentials: `Pa$$w0rd`

For lab instructions, navigate to: <https://github.com/microsoft/Build26-LAB501-from-zero-to-deployed-on-azure-with-ai-agents/tree/main/docs/lab-instructions>

`https://github.com/microsoft/Build26-LAB501-from-zero-to-deployed-on-azure-with-ai-agents/tree/main/docs/lab-instructions`

The Azure account credentials for this lab are available in the **Resources** tab above.

Helpful Links:

`https://github.com/enterprises/skillable-events/sso`

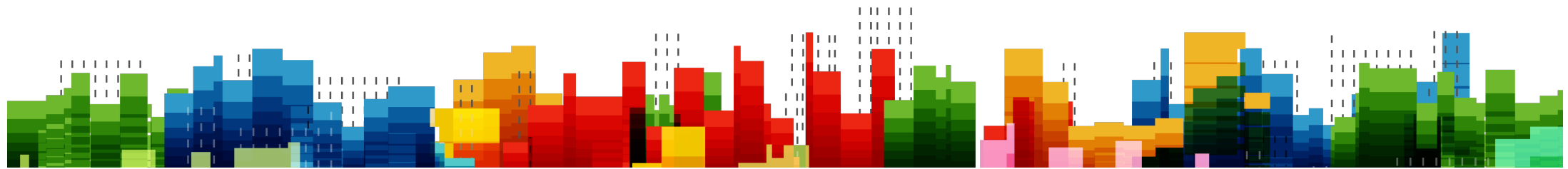
`https://mermaid.live`

← Previous End →

1 Hr 59 Min Remaining

여러분에게 필요한 것은
반복적이고 정확한 복붙 능력

Azure Skills



Azure Skill 이란?

A lightweight, open format — just a Markdown file — for **extending AI agent capabilities**.

Encapsulate specialized knowledge, tools, and workflows that agents can discover and execute autonomously.

SKILL.md

```
---  
name: pdf-builder  
description: Extracts and builds a PDF  
  from a source document.  
author: jane.doe  
version: 1.2.0  
---
```

Instructions

1. Locate the source document.
2. Validate the specified page range.
3. Run scripts/extract.py with the specified page range.
4. Save output under assets/.

예: 마크다운 파일 하나에 정의한 스킬

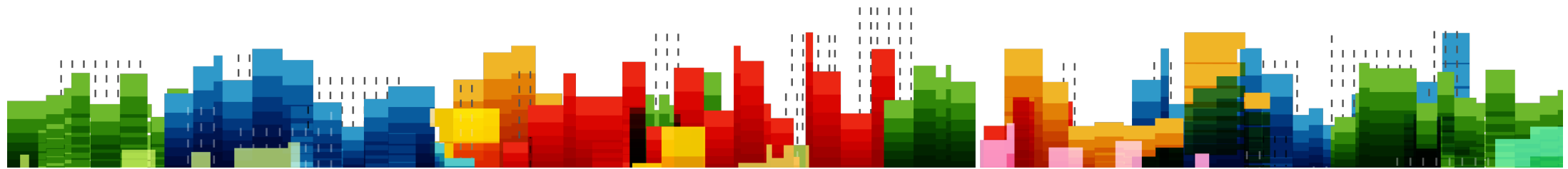
Azure Skills는 브레인에 해당합니다

28개 이상의 엄선한 SKILL.md 파일로 Azure 도메인 전문가 역할을 합니다
다양한 Azure 작업을 위한 워크플로우, 의사결정트리, 가이드라인 등을 제공합니다
Azure 앱 배포를 위한 E2E 시나리오를 모두 커버합니다
prepare, validate, deploy, diagnose, compliance,
RBAC, compute, AI, messaging, cost 등

왜 중요할까요?

- 필요할 때만 로딩합니다
- Auditable, Reusable
- MCP와 자연스럽게 합을 맞추기 좋습니다

Azure MCP 서버



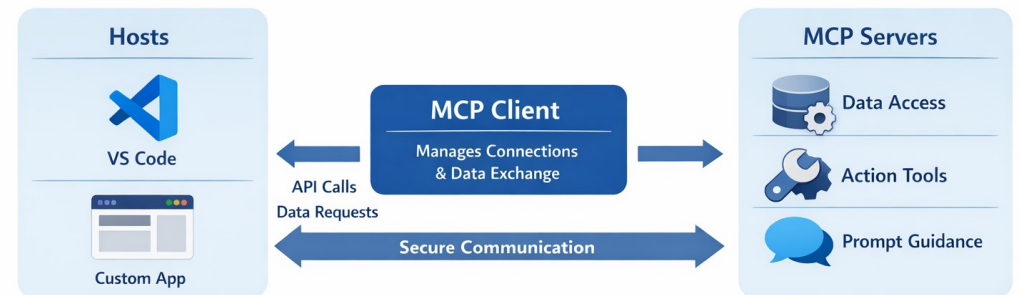
MCP 서버란?

Model Context Protocol a standardized interface that allow AI models to access tools, data, and services.

A host runs an MCP client; the client talks JSON-RPC to one or more MCP servers, which expose tools, resources, and prompts to the LLM.

The Model Context Protocol (MCP)

Managing Tools, Memory & Context



Azure MCP 서버는 손과 발에 해당합니다

200개 이상의 구조적인 도구를 40개 이상의 다양한 Azure 서비스와 연결합니다

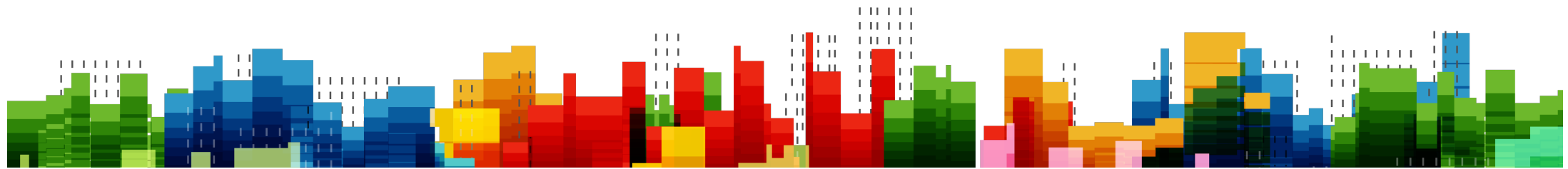
Azure 위에서 앱 운영을 해 줍니다

list resources, check prices, query logs, run diagnostics,
provision infrastructure, drive deployments 등

왜 중요할까요?

- Azure 관련 컨텍스트를 에이전트에 제공합니다
- Azure 베스트 프랙티스를 자동으로 적용합니다
- Azure의 데이터 등에 실시간으로 안전하게 접근할 수 있게 해 줍니다

Azure Skills Plugin





Azure Skills Plugin

The shipping vehicle for Azure Skills + Azure MCP Server + Foundry MCP Server



Azure Skills

Reusable, composable capabilities that encapsulate Azure service expertise

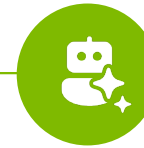
Cover end-to-end scenarios: prepare, validate, deploy, diagnose, observe, compliance, RBAC, compute, observability, AI, messaging, and more



Azure MCP Server

A Model Context Protocol server that connects AI models to Azure

Enable Azure operations: list resources, check prices, query logs, run diagnostics, provision infrastructure, drive deployments



Foundry MCP

A Model Context Protocol server that connects AI models to Foundry

Enable Foundry operations: Explore and deploy models, create and evaluate agents, query knowledge sources

Helpful Resources

- Lab Repo: <https://aka.ms/build2026-LAB501>
- Azure Skills: <https://aka.ms/AzureSkills>
- Azure Skills Plugin Blog Announcement: <https://aka.ms/AzureSkills/Announcement>
- Azure MCP Server: <https://aka.ms/azmcp>
- GitHub Copilot CLI docs: docs.github.com/copilot/github-copilot-in-the-cli